

VOLUME I of II

INDEX OF SHEETS

1	TITLE SHEET
2-6	TYPICAL SECTIONS
7	FOUNDATION TREATMENT & COMPACTION OF EARTHWORK
8-35	PLAN & PROFILE SHEETS
36	INTERSECTION DETAILS
37	PAVING DETAILS
38-43	PAVEMENT DETAILS
44-48	MISCELLANEOUS DETAILS
49-50	INLET AND MANHOLE DETAILS
51	PIPE PROFILES
52	SCHEDULE OF INLETS AND MANHOLES
53	DITCH LINING
54	UNDERDRAINS AND GUIDEPOSTS
55-65	GUARDRAIL
66	METAL END SECTIONS
67	CONCRETE END SECTIONS
68-70	CULVERT DATA
71	PIPE CULVERT DETAILS
72	RCP/RCB OUTLET PROTECTION DETAILS
73	DRAINAGE DATA SHEET
74-98	CULVERTS
99-118	BRIDGE NO. 69-54-5.03 (075)
119-121	BRIDGE STANDARDS
122-130	FENCING PLANS AND FENCING DETAILS
131-138	SUMMARY OF QUANTITIES
139-146	TEMPORARY PROJECT WATER POLLUTION CONTROL
147-195	SIGNING AND PAVEMENT MARKING
196-197	TEMPORARY PAVEMENT DETAILS
198	PROJECT SURFACING
199-219	CONSTRUCTION SEQUENCE
220-236	TRAFFIC CONTROL
237-240	DRAINAGE AREA SHEETS
241-524	CROSS SECTIONS (VOLUME II)

DATE	BY
2002	TransSystems
2005	TransSystems
2005	TransSystems
2005	J. Dietzel - KDOT Road, T. Fleck KDOT - Bridge

STATE OF KANSAS DEPARTMENT OF TRANSPORTATION



PLAN AND PROFILE OF PROPOSED STATE HIGHWAY

FEDERAL AID PROJECT
LINN COUNTY
US-69

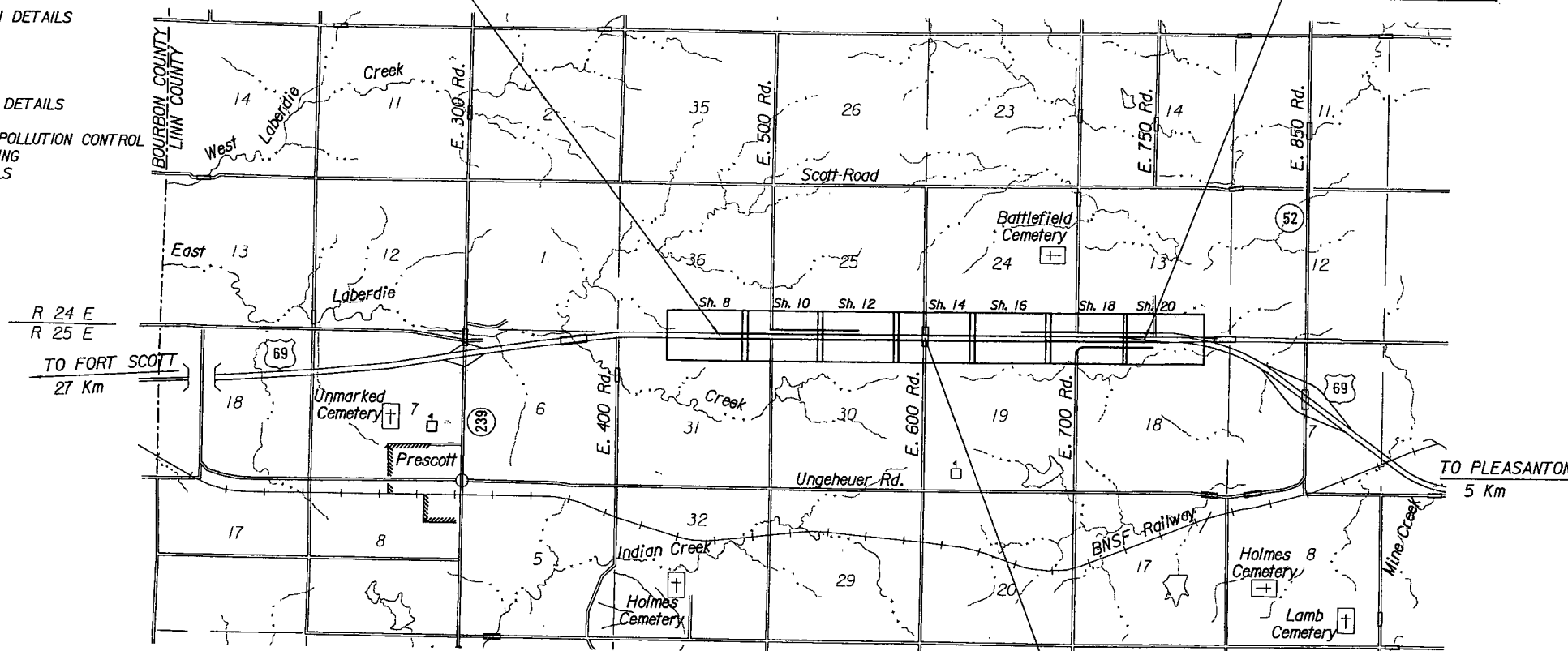
STATE	PROJECT NO.	YEAR	SHEET NO.	TOTAL SHEETS
KANSAS	69-54 K-7893-01	2007	1	524

KDOT PROJ. NO. 69-54 K-7893-01
NHS-K 789 (301)

GRADING AND CONCRETE PAVEMENT
SURFACING
BRIDGES
SIGNING
PAVEMENT MARKINGS

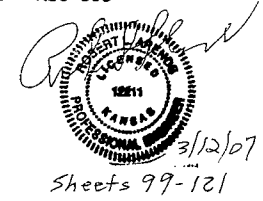
Sta. 65+176.407 BEGIN
Proj. 69-54 K-7893-01 -
Sta. 37+469.016
Proj. 69-54 K-7413-01

Sta. 69+620.000 END
Proj. 69-54 K-7893-01 -
Sta. 69+620.000
Proj. 69-54 K-7892-01



NOTE:
Permanent Seeding Shown in These Plans Will be
Let to Construction in a Future Project.

SCALE = 1:30 000



Note: Traffic to be Carried Through Construction.
Construct Northbound Lanes While Maintaining
Traffic on Existing Lanes. Switch Both Lanes
of Traffic to Northbound Lanes via Crossovers
and Reconstruct Existing Southbound Lanes.

Plans Prepared and
Submitted by:



All dimensions shown without a
SI suffix are in millimeters. All
elevations shown are in meters.

DESIGN DESIGNATION

AADT (2003)	=	5,000
AADT (2023)	=	6,800
DHV (11%)	=	748
D	=	65%
T	=	23%
V	=	110 km/hr
C of A	=	Full
Clear Zone	=	10.5 m

CONVENTIONAL SIGNS

COUNTY LINE	CENTER LINE OF PROJECT	
CITY LIMITS	TERRACE	
STATE OR NATIONAL LINE	CULVERTS	
TOWNSHIP, SECTION or GRANT LINE	DROP INLET & STORM SEWER	
PROPERTY LINE	ACCESS CONTROL	
HIGHWAY FENCE	POWER POLE	
EXISTING FENCE	TELEPHONE POLE	
GUARD FENCE	MARSH	
CONSTRUCTION LIMITS	HEDGE	
RIGHT OF WAY LINE	TREES	
TRAVELED WAY	PROFILE ELEVATION	
RAILROADS	STREAM or CREEK	

GROSS LENGTH OF PROJECT	4,443.593 m
EXCEPTIONS	0.000 m
ADDITIONS	0.000 m
NET LENGTH OF PROJECT	4,443.593 m
NET LENGTH OF BRIDGES	0.000 m
NET LENGTH OF ROAD	4,443.593 m

RECOM. FOR APPROVAL-DATE
CHIEF, BUREAU OF DESIGN KANSAS DEPARTMENT OF TRANSPORTATION
APPROVED - DATE
STATE TRANSPORTATION ENGINEER KANSAS DEPARTMENT OF TRANSPORTATION

RECOM. FOR APPROVAL-DATE
ENGINEER FEDERAL HIGHWAY ADMINISTRATION DEPARTMENT OF TRANSPORTATION
APPROVED - DATE
DIVISION ADMINISTRATOR FEDERAL HIGHWAY ADMINISTRATION DEPARTMENT OF TRANSPORTATION

Plotted By: RMM/MORTON
Plotted: 3/19/2007
File: g:\201\000020\Road\69sec.shx

P.O.T. @ Sta. 65+499.994
 1. Set 0.013 m x 0.610 m Rebar 0.21 m Below Surface
 2. Nail & Shiner Top Cen. Fence Post E. R/W 12.90 m N.E.
 3. Nail & Shiner Top Cen. Fence Post E. R/W 13.27 m S.E.
 4. PK Nail & Shiner E. Edge of Pavement 8.17 m W.
 5. N.O.R.A.

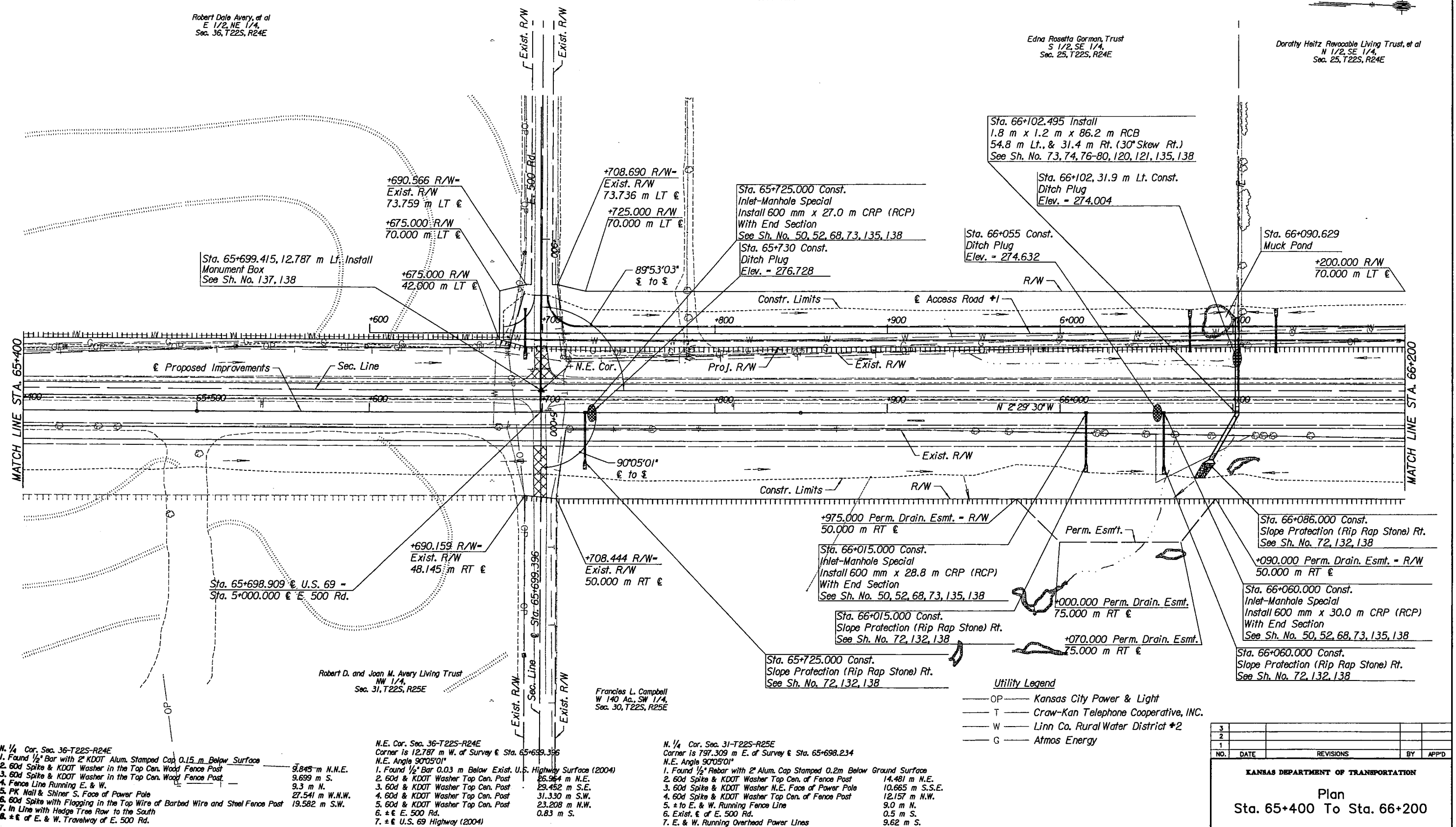
P.O.T. @ Sta. 65+850.003
 1. Set 0.013 m x 0.61 m Rebar 0.25 m Below Surface
 2. E. R/W Fence of Present U.S. 69 8.35 m E.
 3. PK Nail & Shiner E. Edge of Pavement Present U.S. 69 9.80 m W.
 4. Nail & Shiner Top Cen. S. Gate Post For Field Entrance East 64.59 m N.N.E.
 5. N.O.R.A.

STATE	PROJECT NO.	YEAR	SHEET NO.	TOTAL SHEETS
KANSAS	69-54 K-7893-01	2007	10	524

Robert Dale Avery, et al
 E 1/2, NE 1/4,
 Sec. 36, T22S, R24E

Edna Rosetta Gorman, Trust
 S 1/2, SE 1/4,
 Sec. 25, T22S, R24E

Dorothy Heitz, Revocable Living Trust, et al
 N 1/2, SE 1/4,
 Sec. 25, T22S, R24E



Sta. 65+699.415, 12.787 m Lt. Install Monument Box
 See Sh. No. 137, 138

Sta. 65+725.000 Const. Inlet-Manhole Special
 Install 600 mm x 27.0 m CRP (RCP) With End Section
 See Sh. No. 50, 52, 68, 73, 135, 138

Sta. 66+102.495 Install 1.8 m x 1.2 m x 86.2 m RCB
 54.8 m Lt., & 31.4 m Rt. (30° Skew Rt.)
 See Sh. No. 73, 74, 76-80, 120, 121, 135, 138

Sta. 66+102, 31.9 m Lt. Const. Ditch Plug
 Elev. = 274.004

Sta. 66+055 Const. Ditch Plug
 Elev. = 274.632

Sta. 66+090.629 Muck Pond

+975.000 Perm. Drain. Esmt. = R/W 50.000 m RT

Sta. 66+015.000 Const. Inlet-Manhole Special
 Install 600 mm x 28.8 m CRP (RCP) With End Section
 See Sh. No. 50, 52, 68, 73, 135, 138

Sta. 66+086.000 Const. Slope Protection (Rip Rap Stone) Rt.
 See Sh. No. 72, 132, 138

+090.000 Perm. Drain. Esmt. = R/W 50.000 m RT

Sta. 66+060.000 Const. Inlet-Manhole Special
 Install 600 mm x 30.0 m CRP (RCP) With End Section
 See Sh. No. 50, 52, 68, 73, 135, 138

Sta. 65+725.000 Const. Slope Protection (Rip Rap Stone) Rt.
 See Sh. No. 72, 132, 138

- Utility Legend**
- OP— Kansas City Power & Light
 - T— Craw-Kan Telephone Cooperative, INC.
 - W— Linn Co. Rural Water District #2
 - G— Atmos Energy

- N. 1/4 Cor. Sec. 36-T22S-R24E
- Found 1/2" Bar with 2" KDOT Alum. Stamped Cap 0.15 m Below Surface
 - 60d Spike & KDOT Washer in the Top Cen. Wood Fence Post 9.845 m N.N.E.
 - 60d Spike & KDOT Washer in the Top Cen. Wood Fence Post 9.699 m S.
 - Fence Line Running E. & W. 9.3 m N.
 - PK Nail & Shiner S. Face of Power Pole 27.541 m W.N.W.
 - 60d Spike with Flogging in the Top Wire of Barbed Wire and Steel Fence Post 19.582 m S.W.
 - In Line with Hedge Tree Row to the South
 - ± E. & W. Travelway of E. 500 Rd.

- N.E. Cor. Sec. 36-T22S-R24E
 Corner is 12.787 m W. of Survey @ Sta. 65+699.396
 N.E. Angle 90°05'01"
- Found 1/2" Bar 0.03 m Below Exist. U.S. Highway Surface (2004)
 - 60d & KDOT Washer Top Cen. Post 26.964 m N.E.
 - 60d & KDOT Washer Top Cen. Post 29.452 m S.E.
 - 60d & KDOT Washer Top Cen. Post 31.330 m S.W.
 - 60d & KDOT Washer Top Cen. Post 23.208 m N.W.
 - ± E. 500 Rd. 0.83 m S.
 - ± E. U.S. 69 Highway (2004)

- N. 1/4 Cor. Sec. 31-T22S-R25E
 Corner is 797.309 m E. of Survey @ Sta. 65+698.234
 N.E. Angle 90°05'01"
- Found 1/2" Rebar with 2" Alum. Cap Stamped 0.2m Below Ground Surface
 - 60d Spike & KDOT Washer Top Cen. of Fence Post 14.481 m N.E.
 - 60d Spike & KDOT Washer N.E. Face of Power Pole 10.665 m S.S.E.
 - 60d Spike & KDOT Washer Top Cen. of Fence Post 12.157 m N.W.
 - ± to E. & W. Running Fence Line 9.0 m N.
 - Exist. ± of E. 500 Rd. 0.5 m S.
 - E. & W. Running Overhead Power Lines 9.62 m S.

- B.M. #23 "U" Shaped Fence Post Flush with Ground & 0.25 m E. of Cor. Post S.W. Quad E. 500 Rd. & U.S. 69
 37.080 m Lt. @ Sta. 65+80.278; Elev. 278.011
- B.M. 23A RR Spike in S.E. Face Service Power Pole Northside of E. 500 Rd.
 281.981 m Lt. @ Sta. 65+709.443; Elev. 275.921
- B.M. #23B RR Spike S. Face of Power Pole Northside of E. 500 Rd. to E.
 234.669 m Rt. @ Sta. 65+689.670; Elev. 276.479

B.M. #24 Cut-off Top Cen. of W. Hubguard of 1.829 m x 1.219 m RCB
 20.837 m Lt. @ Sta. 66+102.475; Elev. 274.585

NO.	DATE	REVISIONS	BY	APP'D
3				
2				
1				

KANSAS DEPARTMENT OF TRANSPORTATION

Plan
Sta. 65+400 To Sta. 66+200

SHEET	OF	SCALE	APP'D
DESIGNED	DBP	DETAILED	RWM
QUANTITIES	LRS	CADD	RWM
DESIGN CK.	SYS	DETAIL CK.	DBP
CADD CK.	RWM		

General Notes

THE GEOLOGICAL INFORMATION SHOWN ON THESE PLANS IS FROM STUDIES MADE IN THE FIELD AND REPRESENTS THE BEST INFORMATION AVAILABLE TO THE KANSAS DEPARTMENT OF TRANSPORTATION.

AT BORROW AREA LOCATIONS ADJACENT TO RIGHT OF WAY, UTILITY POLES MAY BE SET AT THE PERMANENT LOCATIONS PRIOR TO CONSTRUCTION AS APPROVED BY THE ENGINEER PROVIDED A MINIMUM VERTICAL CLEARANCE, IN ACCORDANCE WITH THE NATIONAL ELECTRICAL SAFETY CODE IS OBTAINED. THE CONTRACTOR WILL BE REQUIRED TO WORK AROUND THESE POLES TO COMPLETE THE WORK.

ALL BORROW TO BE OBTAINED FROM AREAS PROVIDED BY THE CONTRACTOR SHALL BE APPROVED BY THE ENGINEER, BOTH AS TO SUITABILITY OF MATERIAL AND SITE LOCATION. LOCATIONS WHICH, IN THE OPINION OF THE ENGINEER, CONTAIN UNSUITABLE MATERIAL OR WILL LEAVE AN UNSIGHTLY APPEARANCE ON THE PROJECT WILL NOT BE APPROVED.

CHANNELS SHALL BE CUT AT BOX CULVERTS (UNLESS OTHERWISE NOTED) TO FLOW LINE ELEVATIONS AND TO A WIDTH OF 300 mm OUTSIDE OF EACH OUTSIDE WALL AND WITH SLOPES 1 TO 2 PRIOR TO CONSTRUCTION OF THE CULVERT.

EXCAVATION SHOWN TO BE WASTED SHALL BE WASTED ON SITES OUTSIDE THE RIGHT-OF-WAY PROVIDED BY THE CONTRACTOR. THESE SITES SHALL BE APPROVED BY THE ENGINEER AS TO SUITABILITY, APPEARANCE, AND SITE LOCATION. LOCATIONS THAT, IN THE OPINION OF THE ENGINEER, WILL LEAVE AN UNSIGHTLY APPEARANCE WILL NOT BE APPROVED.

ALL TREES, HEDGE ROWS, SHELTERBELTS, AND WOODY SHRUBS NOT SHOWN TO BE REMOVED AND LOCATED BETWEEN THE CONSTRUCTION LIMITS AND THE RIGHT-OF-WAY LINE OR EASEMENT LINE SHALL BE SPARED UNLESS DIRECTED BY THE ENGINEER TO BE REMOVED. ALL TREES WITHIN THE APPROPRIATE ZONE SHALL BE REMOVED.

EXISTING GUARD FENCE AND PIPES REMOVED IN THIS PROJECT SHALL BECOME THE PROPERTY OF THE CONTRACTOR. THIS WORK SHALL BE PAID FOR UNDER THE BID ITEM "REMOVAL OF EXISTING STRUCTURES."

CONCRETE RUBBLE AND EXCESS BITUMINOUS MATERIAL REMOVED SHALL BECOME THE PROPERTY OF THE CONTRACTOR, UNLESS SPECIFIED ELSEWHERE IN THE PLANS.

DRAINAGE STRUCTURES WHICH ARE TO REMAIN, WHETHER EXTENDED OR NOT, SHALL BE CLEANED OUT, WITH ANY SECTIONS OF PIPES OR END SECTIONS RESET AS DIRECTED BY THE ENGINEER. THIS WORK SHALL BE PAID FOR UNDER THE BID ITEM "CLEANING EXISTING STRUCTURES."

ALL EXISTING DRAINAGE STRUCTURES AND END SECTIONS WHICH ARE REMOVED SHALL BECOME THE PROPERTY OF THE CONTRACTOR. TERRACES WHICH ARE LEVEL OR DRAIN AWAY FROM THE PROJECT SHALL BE PLUGGED INSIDE THE RIGHT-OF-WAY LINE BY THE CONTRACTOR OR AS DIRECTED BY THE ENGINEER. THIS CONSTRUCTION SHALL BE SUBSIDIARY TO OTHER BID ITEMS.

FOR DITCH PLUG DETAILS, SEE SHEET NO. 2

SEE SHEET 5 FOR ADDITIONAL GENERAL NOTES

ALL SAWCUTS SHALL BE FULL DEPTH OR AS APPROVED BY THE ENGINEER AND SHALL NOT BE PAID FOR DIRECTLY, BUT SHALL BE SUBSIDIARY TO OTHER ITEMS IN THE CONTRACT.

ALL LABOR, MATERIALS, AND EQUIPMENT NECESSARY TO MAKE CONNECTIONS TO EXISTING SMALL STRUCTURES SHALL NOT BE PAID FOR DIRECTLY, BUT SHALL BE SUBSIDIARY TO OTHER ITEMS OF THE CONTRACT.

CRAW-KAN TELEPHONE COOPERATIVE, INC.
200 W. Ozark
Girard, KS 66743
Dave Distin
316-724-8235

UTILITY OWNERS
ATMOS ENERGY
903 Depot
Pleasanton, KS 66075
Ron Snyder
913-352-6535

LINN CO. RURAL WATER DISTRICT #2
P.O. Box 264
Mound City, KS 66056
Christine Teagarden
913-795-2294

KANSAS CITY POWER & LIGHT
No Contact Needed

SCALE

PLAN: Lat. & Long. (meters)
PROFILE: Horiz. same as above, Vert.

PROJECT SURVEY CONTROL

Horizontal Project Datum:

Avg. Elevation = 278 meters
Latitude = 38°19'24.8"
Project Coordinates x C.A.F. (.99990859) - Kansas State Plane South Zone

Vertical Datum:

NAVD Vertical Datum of 1929
Datum Bench Mark - Our BM. #10 -
KDOT BM. #74 From
KDOT Proj. #69-54-K7413-01, 1999
Our BM. #39 -
KDOT BM. #10 From
KDOT Proj. #69-54-K2369-01, 1988

W. 1/4 Cor. Sec. 36-T22S-R24E

1. Found 1/2" Bar with Alum. Cap That has no Punch Mark
2. Bent 60d with KDOT Washer in N.W. Face Wood Post
3. 60d With KDOT Washer in S. Face Wood Post
4. Set 16d with Shiner S.E. Face S. Gate Post
5. 60d with KDOT Washer N.E. Face Fiber Post
6. ± E of Scott Road
7. ± E of E. - W. Hedge Line

12.604 m N.E.
7.940 m E.S.E.
12.263 m S.W.
8.399 m W.N.W.
0.22 m W.
1.40 m S.

E. 1/4 Cor. Sec. 36-T22S-R24E

- Corner is 13.855 m W. of Survey & Sta. 64+889.410
N.E. Angle 89°54'38"
1. Found 1/2" Rebar at the Surface of the Exist. Pavement of U.S. 69 Highway (2004)
 2. 60d Spike & KDOT Washer Top Cen. of Fence Post
 3. 60d Spike & KDOT Washer Top Cen. Wood Cor. Post
 4. 60d Spike & KDOT Washer Top Cen. Wood Cor. Post
 5. 60d Spike & KDOT Washer Top Cen. of Wood Fence Post
 6. ± of Exist. U.S. 69 Hwy. (2004)
 7. Extension Westerly of a Fence Line and Hedge Tree Row
 8. ± of a Field Entrance to the West
 9. In Line with Fence Line and Hedge Tree Row Running East

32.984 m E.N.E.
31.783 m E.
22.922 m W.N.W.
23.765 m W.N.W.
1.27 m E.
2.80 m N.
2.50 m S.

E. 1/4 Cor. Sec. 31-T22S-R25E

- Corner is 794.451 m E. of Survey & Sta. 64+890.651
N.E. Angle 89°54'38"
1. Found 1/2" Rebar with 2" Stamped Alum. Cap 0.03 m Below Ungeheuer Road Pavement Surface
 2. 60d Spike & KDOT Washer Top Cen. of Fence Post
 3. 60d Spike & KDOT Washer Top Cen. of Wood Brace Post
 4. Top Cen. of Phone Splice Box
 5. 60d Spike & KDOT Washer Top Cen. of Wood Cor. Post
 6. 60d Spike & KDOT Washer Top Cen. of N. Gate Post
 7. ± of Ungeheuer Road

13.948 m E.N.E.
11.794 m E.S.E.
9.450 m S.W.
9.038 m W.
10.856 m W.N.W.
0.95 m E.

B.M. #10 KDOT Rivet & Washer in Center of W. Hubguard of Double 2.133 m x 1.524 m RCB 1.0 miles ± S. of K-239 and U.S. 69 Interchange, Elev. 254.526

B.M. #20 0.018 m Bolt in Top Cen. of S. End of E. Hubguard to 1.525 m x 0.915 m RCB 5.765 m Lt. & Sta. 64+606.860; Elev. 269.965

B.M. #21 "J" Shaped Fence Post Flush With Ground 0.25 m E. of W. R/W Fence Line 34.106 m Lt. & Sta. 65+025.401; Elev. 275.877

B.M. #22 "J" Shaped Fence Post 0.04 m Above Ground & 0.15 m E. of W. R/W Fence Line 34.529 m Lt. & Sta. 65+384.609; Elev. 279.989

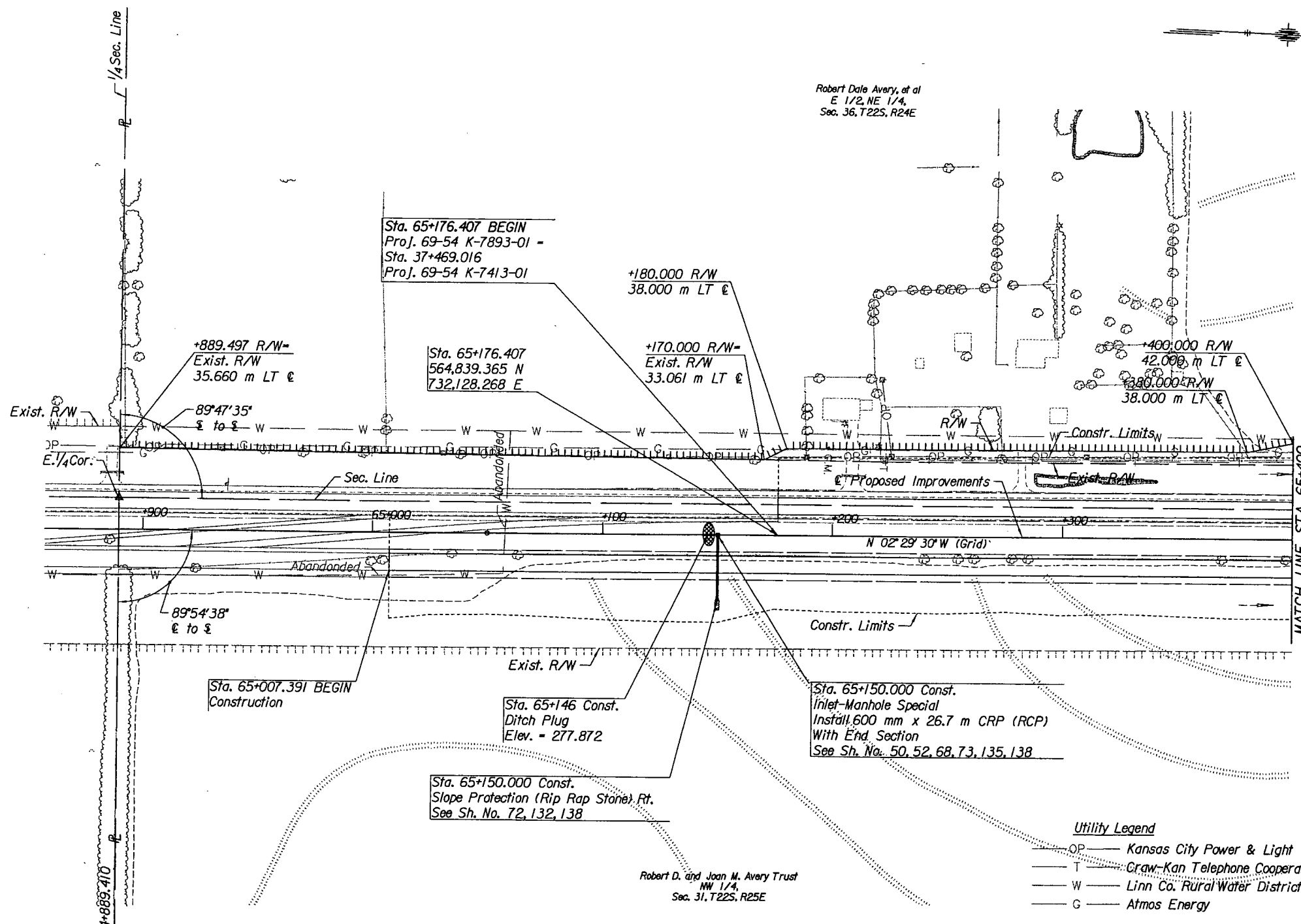
- P.T. & Sta. 64+671.099
1. Set 0.013 m x 0.610 m Rebar 0.45 m Below Surface
 2. N.E. Cor. of E. Headwall
 3. PK Nail & Shiner E. Edge of Pavement U.S. 69
 4. PK Nail & Shiner E. Edge of Pavement Present U.S. 69

62.81 m S.S.W.
11.03 m S.W.
10.64 m N.W.

- P.O.T. & Sta. 65+049.997
1. Set 0.013 m x 0.610 m Rebar 0.30 m Below Surface
 2. Nail & Shiner Top Cen. Fence Post E. R/W Fence
 3. Top Cen. 0.1 m x 0.1 m Concrete R/W Marker
 4. PK Nail & Shiner E. Edge of Present U.S. 69 Pavement

20.48 m N.E.
17.96 m S.E.
8.18 m W.

STATE	PROJECT NO.	YEAR	SHEET NO.	TOTAL SHEETS
KANSAS	69-54 K-7893-01	2007	8	524



Utility Legend

- OP - Kansas City Power & Light
- T - Crawl-Kan Telephone Cooperative, INC.
- W - Linn Co. Rural Water District #2
- G - Atmos Energy

NO.	DATE	REVISIONS	BY	APP'D
3				
2				
1				

KANSAS DEPARTMENT OF TRANSPORTATION

Plan

Sta. 65+000 To Sta. 65+400

SHEET	OF	SCALE	APP'D
DESIGNED	DBP	DETAILED	RWM
DESIGN CK.	SYS	DE-TAL CK.	DBP
QUANTITIES	LRS	CADD	RWM
QUANTITY CK.	DBP	CADD CK.	RWM