

NYSDOT IC Demonstration - On-Site Contact List

Last name	First name	Affiliation	Telephone	Email
ICPF Project Team				
Chang	George	Transtec Group, Inc. (main contact)	512-451-6233 C 512-659-1231	gkchang@thetranstecgroup.com
Horan	Bob	Asphalt Institute	C 804-539-3036	bhoran@AsphaltInstitute.org
Xu	Qinwu	Transtec Group, Inc.	512-451-6233	qinwu@thetranstecgroup.com
Merritt	Dave	Transtec Group, Inc.	512-451-6233	dmerritt@thetranstecgroup.com
White	David	ISU Geotechnical Mobile Lab	515-294-1463 C 515-290-1080	djwhite@iastate.edu
Gieselman	Heath	ISU Geotechnical Mobile Lab	C 515-450-1383	giese@iastate.edu
Saez	Deeyvid	TTI – BCD test	C 520-982-5206	dsaez01@neo.tamu.edu
Gallivan	Lee	FHWA	317-226-7493	Victor.Gallivan@fhwa.dot.gov
State DOT				
Zavery	Zoeb	NYSDOT– Albany (MO Materials)	518-485-5277	zzavery@dot.state.ny.us
Dwyer	Don	NYSDOT– Albany (MO Geotech)	518-457-4724	ddwyer@dot.state.ny.us
Fisher	Dave	Region 5, Materials Engineer	716- 667-1711 C 716-863-2012	dfisher@dot.state.ny.us
Wardzinski	Eugene	Engineer in Charge	716-592-7428	ewardzinski@dot.state.ny.us
Van Splunder	Tom	Region 5	C 716-880-5281	tvansplunder@dot.state.ny.us
Plesac	Daniel	Region 5, Technical Services Engineer		dplesac@dot.state.ny.us
Zieziula	Joseph	Region 5, Geotechnical Services Engineer	716 667-1711	jzieziula@dot.state.ny.us
Nebral	Chris	NYSDOT– Albany (MO Geotech) Area Geotechnical Engineer	518-457-4717 C 518-376-9466	cnebral@dot.state.ny.us
Paulsen	Craig	NYSDOT – FWD operator	518-457-7491	cpaulsen@dot.state.ny.us
Curtis	Jim	NYSDOT– Albany (MO Geotech) Supervisor, General Soils Laboratory	518 457-4735	jcurtis@dot.state.ny.us
Roller Vendors				
Connolly	Chris	Bomag	301-529-8477	chris.connolly@bomag.com
Dennison	Dave	Bomag (on-site)	C 309-853-7862	dave.dennison@bomag.com
Oetken	Nick	Caterpillar	763-493-7542	oetken_nick_a@cat.com
DeClerk	Allen	Caterpillar (on-site)	C 309-696-1319	declerk_allen_j@cat.com
Rakowski	Stan	Sakai (on-site)	C 717-437-5400	s-rakowski@sakaiamerica.com
	Ryan	Trimble Tech Support	C 716-628-6661	
Paving Contractors				
Forrestel	Stephen	President, Cold Spring construction	716-542-2011 C 716-863-2747	sforrestel@coldspringconstruction.com
Telecky	Don	Superintendent, Cold Spring construction	C 716-913-9140	

Roller Shipment

The shipping address is: 200 Zoar Valley Road, Springville, NY 14141 - a Cold Spring Construction office. Rollers will be shipped to this address by Friday (May 15, 2009).

Contact: 716-592-4971

Site Map of the IC Demo Project - US 219

Site Plan

(to do)



Open House

Where:

(1) (indoor presentation) NYSDOT Orchard Office: 5900 New Taylor Road, Orchard Park, NY 14127. (~ 15 miles north to the field site)

(2) (outdoor demonstration) IC demo field site at Route 219

When:

Thursday, May 21, 2009 from 10:30 AM to 2:30 PM

Agenda:

10:30AM to 12:00AM (indoor presentation) IC presentation on preliminary results

12:00AM to 1:30AM (lunch on your own)

1:30PM to 2:30PM (outdoor demonstration) demonstration of IC rollers, ISU geotechnical lab, and in-situ test equipments

Contact:

David Fisher, NYSDOT, 716- 667-1711



Safety

Hard hat, steel-toe boots and safety vest are required. Safety goggles are optional.

Test Schedule and Settings (Soil/Subbase IC)

Date	TB	Machine	Amp (mm)	Spot Tests	Notes/Comments
05/17	ISU arrives at site to setup mobile lab (2pm) Setup BOMAG/CAT rollers and make trial runs with GPS (3pm) Meet with Contractor and identify potential test areas (4pm) Collect material samples for on-site laboratory characterization (5pm)				
05/18	1	BOMAG (smooth)	0.7, 2.0 Auto	DCP, LWD, NG, PLT, BCD(?)	10 m x 60 m calibration test area. 1.Compact foundation layer with 8 roller passes and map. 2.Place one 300 mm loose lift of silty gravel over area 3.Compact in three lanes using low, high, and vario control – 10 passes + 3 mapping passes 4.Develop compaction curves 5.Excavate trenches and repeat compaction
	2	CAT (smooth)	TBD	DCP, LWD, NG, PLT, FWD	Roller mapping in production areas of embankment and aggregate base. Monitor existing practice and perform in-situ tests for comparison. Use data for test run on IC QA specification.
05/19	3	CAT (smooth)	0.9 1.8	DCP, LWD, NG, PLT, BCD	15 m x 60 m calibration test area. 1.Compact foundation layer with 8 roller passes and map. 2.Place 300 mm loose lift of silty gravel over a area for lanes 1/2 and 600 mm loose lift lanes 3/4. 3.Create wet spot (+4%) 15 m x 10 m 4.Compact in four lanes using low and high 10 passes + 2 mapping passes 5.Develop compaction curves
	4	BOMAG (smooth)	TBD	DCP, LWD, NG, PLT, FWD	Roller mapping in production areas of embankment and aggregate base. Monitor existing practice and perform in-situ tests for comparison. Use data for test run on IC QA specification.
5/20 to 5/22	5/6	BOMAG (smooth)/ CAT (Smooth)	TBD	DCP, LWD, NG, PLT, FWD	Production compaction areas of embankment and aggregate base. Multiple lifts.
05/21	Open House –presentation of preliminary results and roller demonstrations.				

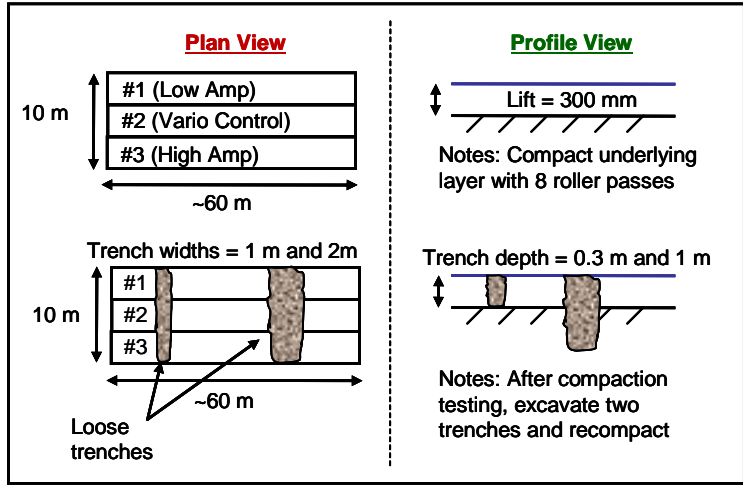
Embankment/Pavement Foundation Layers

4"	Aggregate Base (2 inch minus)	③
8"	Aggregate Base (4 inch minus)	②
	Embankment/Subgrade (Sandy Silt/Gravel)	①

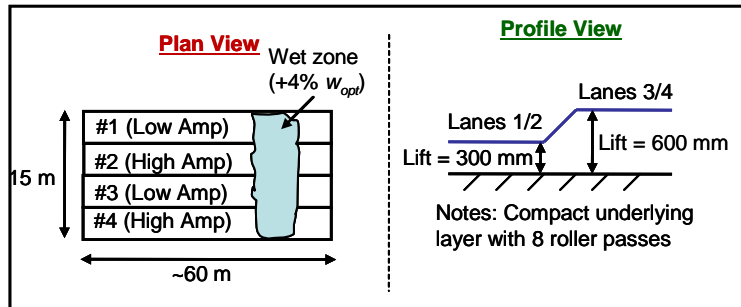
Notes:

- A. Moisture condition calibration test strip areas \pm 1.5% optimum except as noted.
- B. NYSDOT assistance requested for FWD testing and information on project QA testing requirements.
- C. As time permits repeatability passes for roller will be performed on embankment and aggregate base.

Calibration Test Strips - BOMAG



Calibration Test Strips - CAT

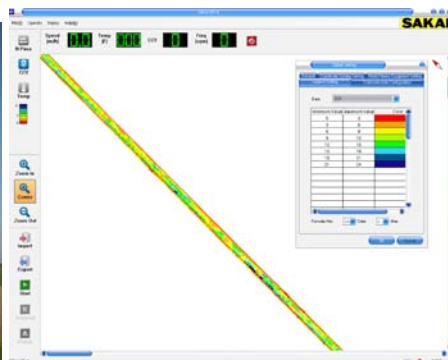


Test Schedule and Settings (Mini Asphalt IC)

(the following schedule and settings are tentative and subject to change)

Date	TB	Machine	Amp (mm)	Spot Tests	Notes/Comments
05/17	Arrive on site.				
05/18	7	Sakai (tandem)	0.6 (high) at 2500 vpm, 0.3 (low) at 3000 vpm	N/A	Machine and GPS setup and trial runs. 1. Verify the roller GPS measurements 2. Trial runs at different settings
05/19	7	Sakai (tandem)	0.6 (high) at 2500 vpm, 0.3 (low) at 3000 vpm	FWD(?)	Map the existing base. 1. Verify the roller GPS measurements 2. Trial runs 3. Map the existing base
05/20	7	Sakai (tandem)	0.3 (high) at 4000 vpm	NG	Production rolling for asphalt wearing course. 1. Verify the roller temperature measurements 2. Compact asphalt base layer with normal roller passes. 3. Spot test with nuclear density gauge.
5/21 to 5/22	TBD	Sakai (tandem)	TBD	NG	Production compaction areas of designated area.
05/21	Open House –presentation of preliminary results and roller demonstrations.				

Sakai Double Drum IC roller



In-Situ Testings and Etc.

ISU Geotechnical Lab

- Light Weight Deflectometers (LWD)
- Dynamic Cone Penetrometers (DCP)
- Calibrated Nuclear moisture-density Gauge (NG)
- Static/repetitive Plate Load Test(PLT)
- Briau Compaction Device (BCD)

All test locations will accompany with survey grade GPS location data. The above tests would take approximately one-hour for a given test bed. It's recommended for all non-ISU lab tests to be located at the same locations as the ISU ones. Soil samples will also be taken for laboratory tests.

NYSDOT

- Falling Weight Deflectometer (FWD) and an operator
- Light Weight Deflectometers (LWD)
- Nuclear density Gauge (NG) for soil
- (Modified) Proctor Tests
- Nuclear density Gauge (NG) for asphalt

Cold Spring Construction

- Set up a Trimble GPS base station
- Prepare test beds (3-ft excavator will be used to dig trenches of test strips, water trucks will be used to create wetter spots, etc.)